

IFAT 2026

Danish Energy Export

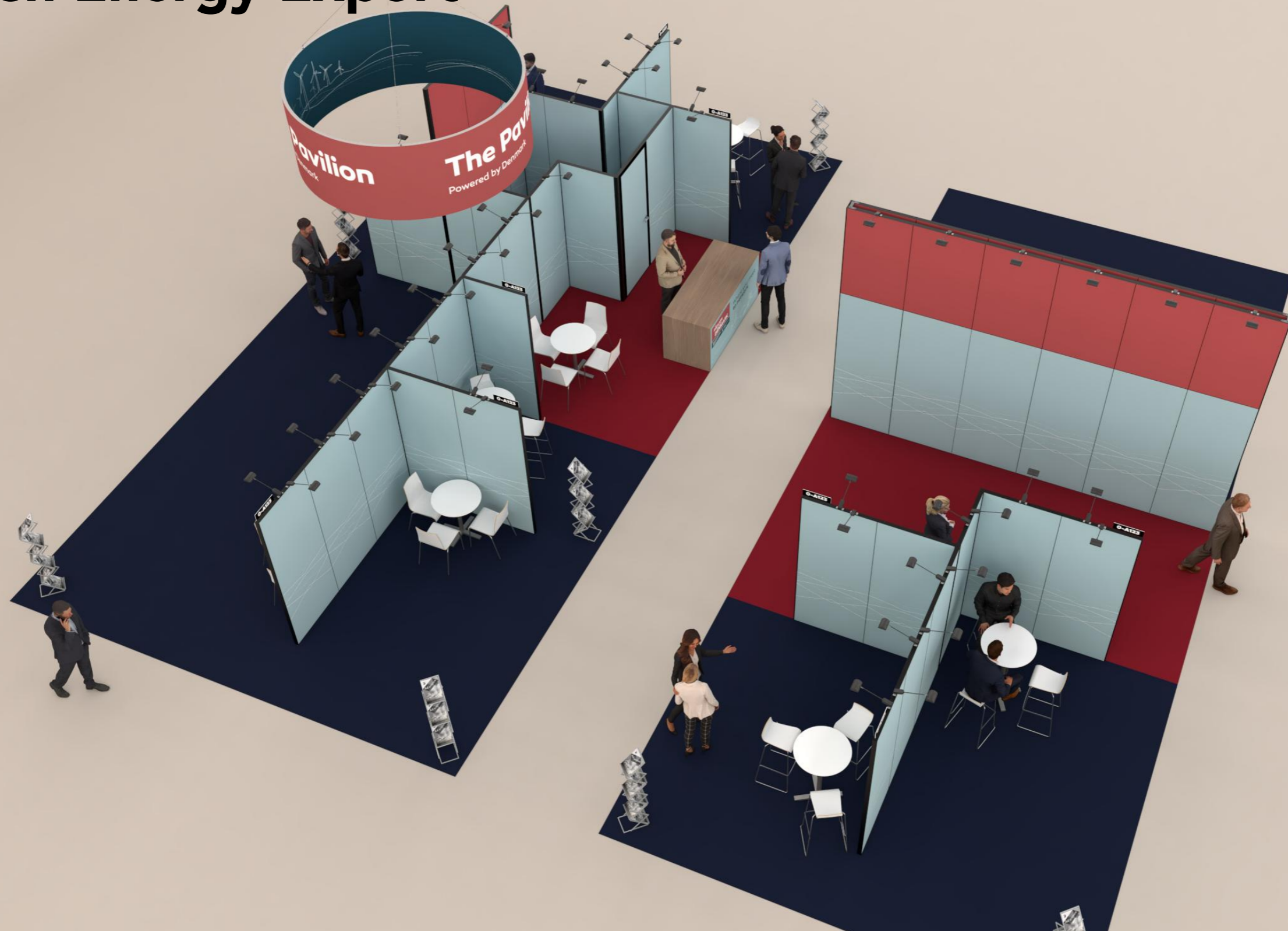


Table of Contents

Cover	1
Table of Contents	2
3D View 1	3
3D View 2	4
3D View 3	5
3D View 4	6
Floor Plan	7
Floor Plan - Banners	8
Graphics Dimensions	9
Graphics Dimensions Top	10
Elevations	11
Info	

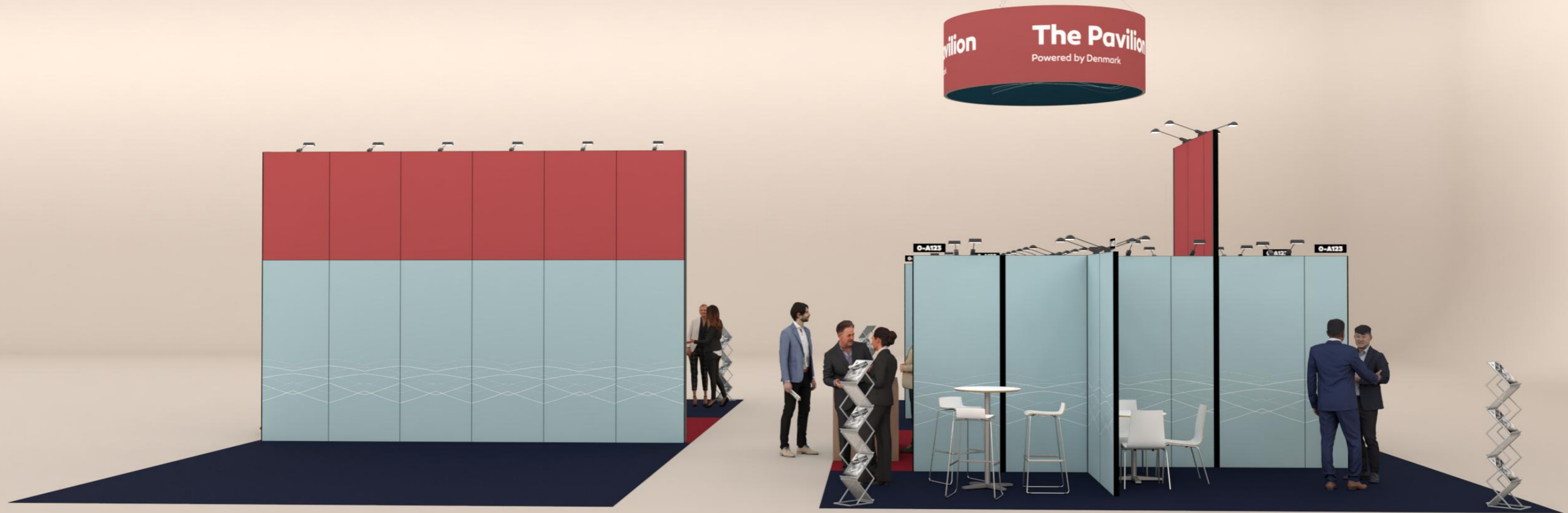
3D View 1



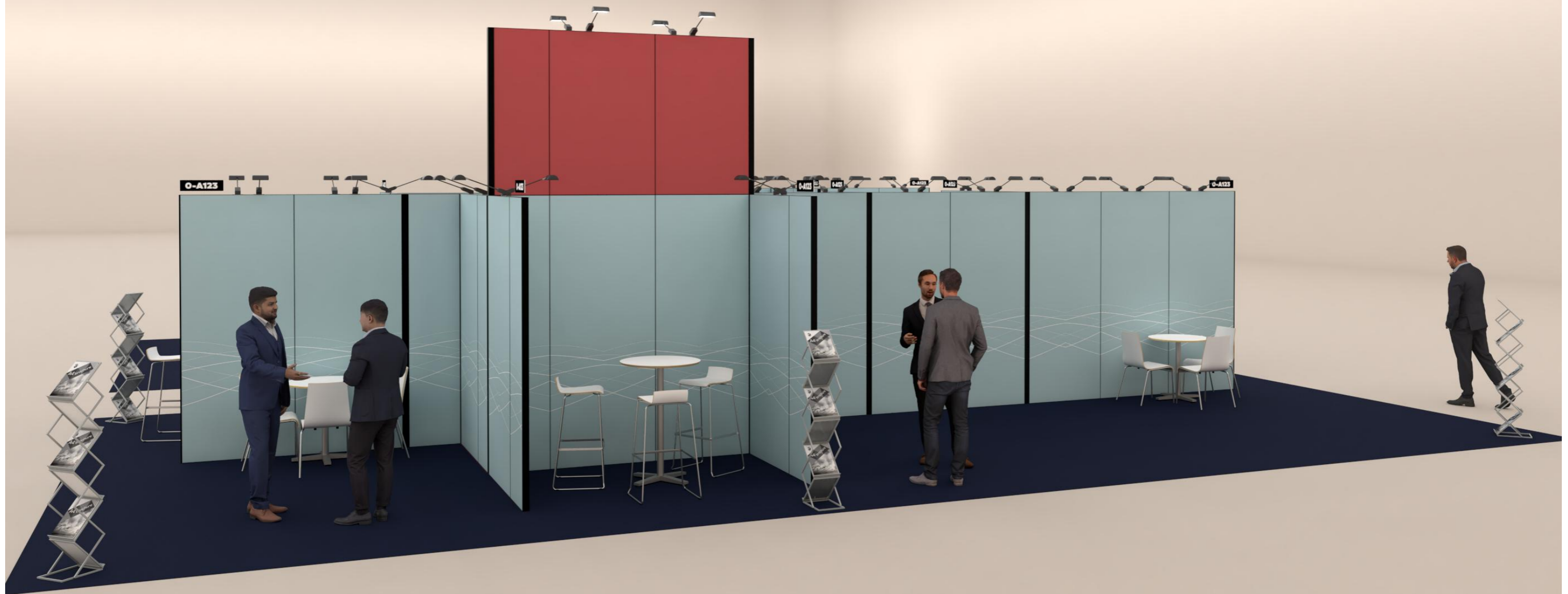
3D View 2



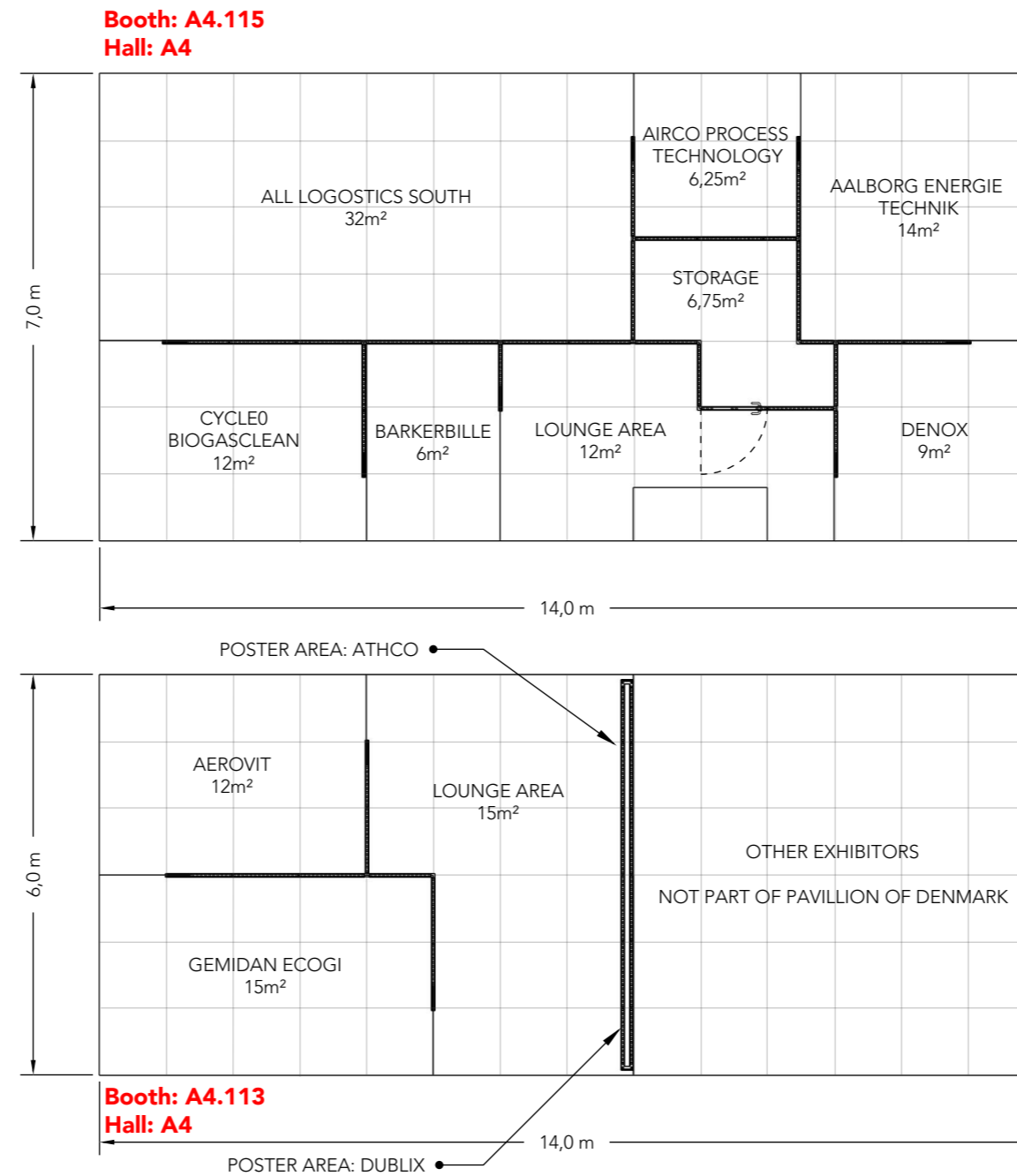
3D View 3



3D View 4



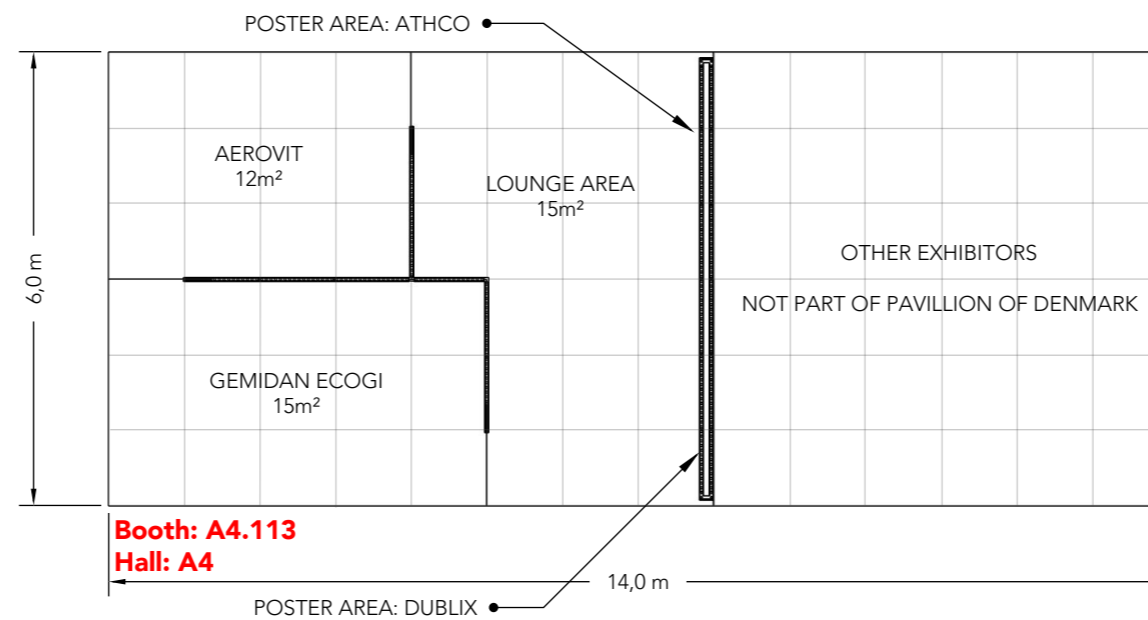
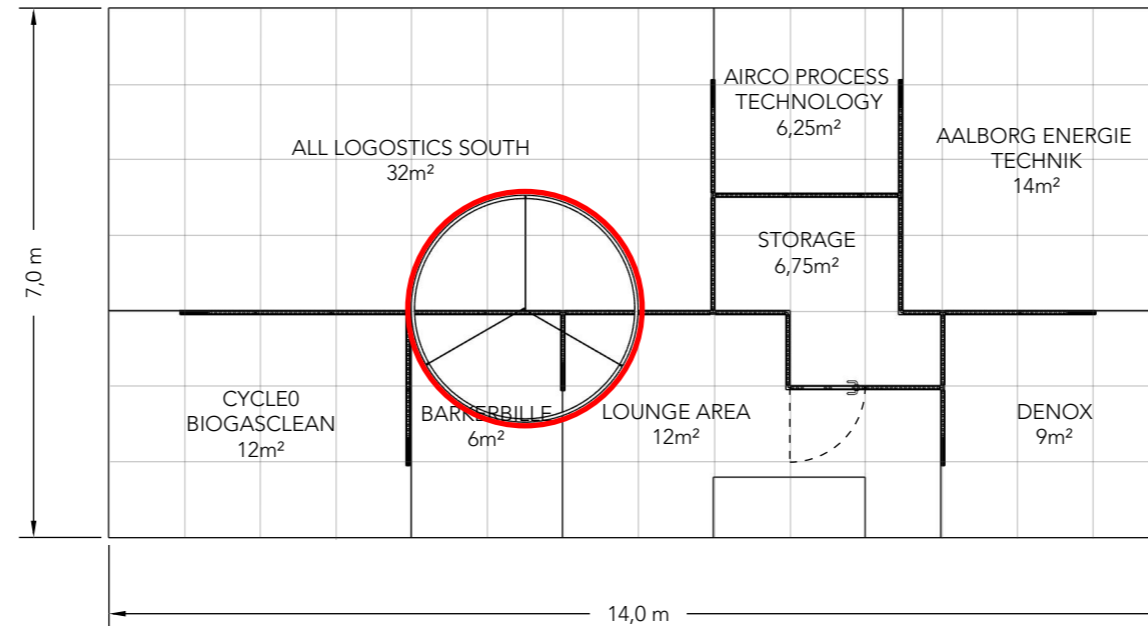
Floor Plan



Floor Plan - Banners

— PoD CUBES

Booth: A4.115
Hall: A4



Booth: A4.113
Hall: A4

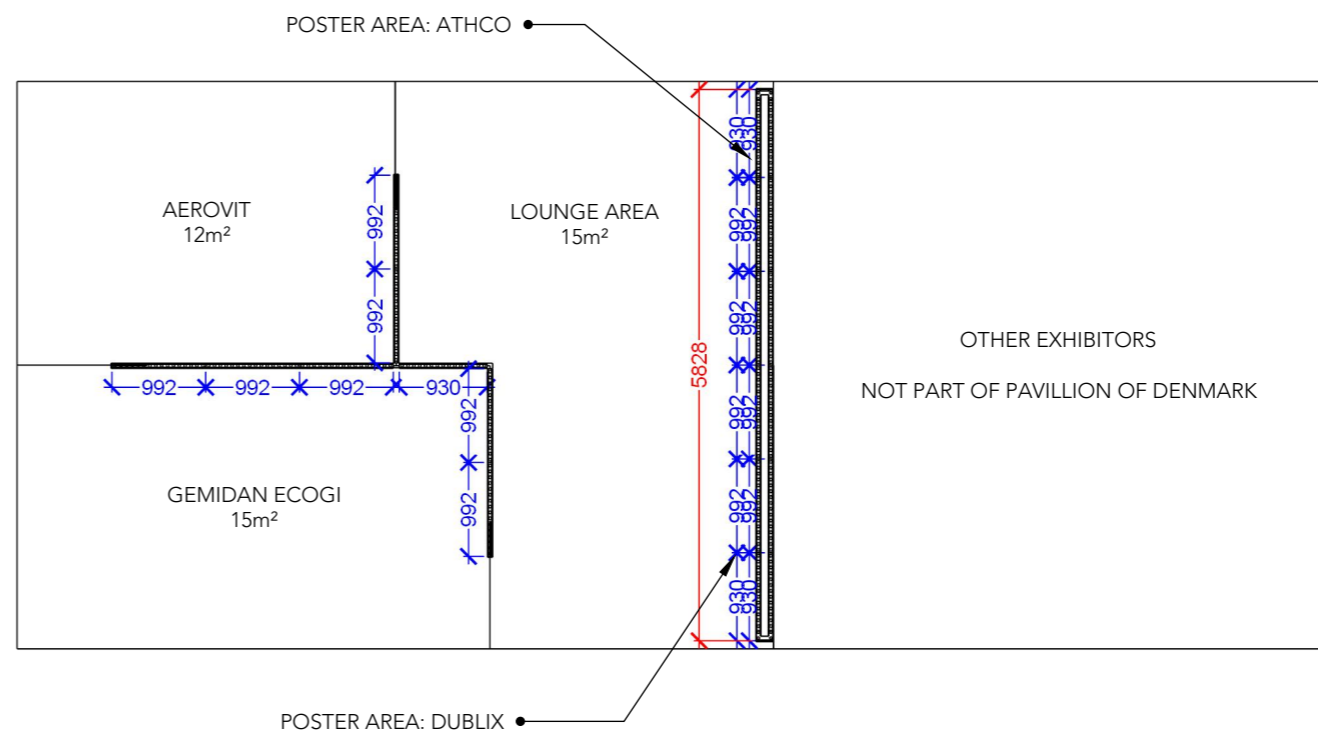
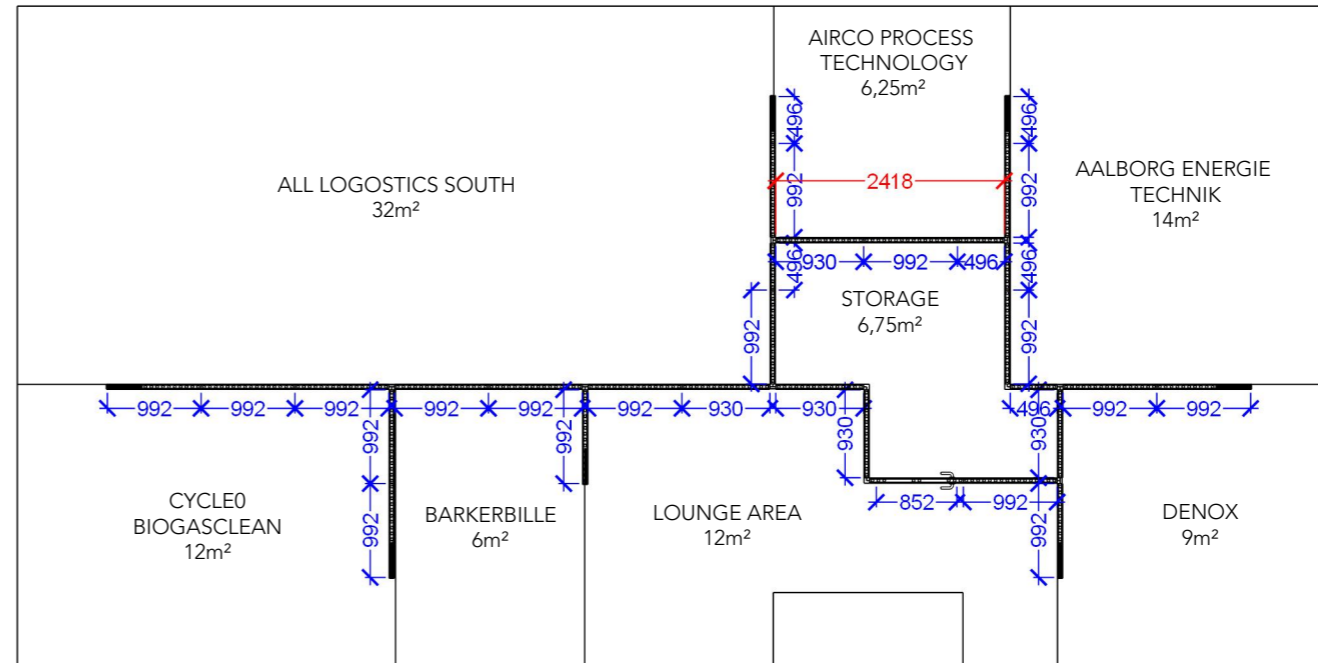
Graphics Dimensions Top

WALL HEIGHT: 2480mm

DOOR HEIGHT: 2398mm

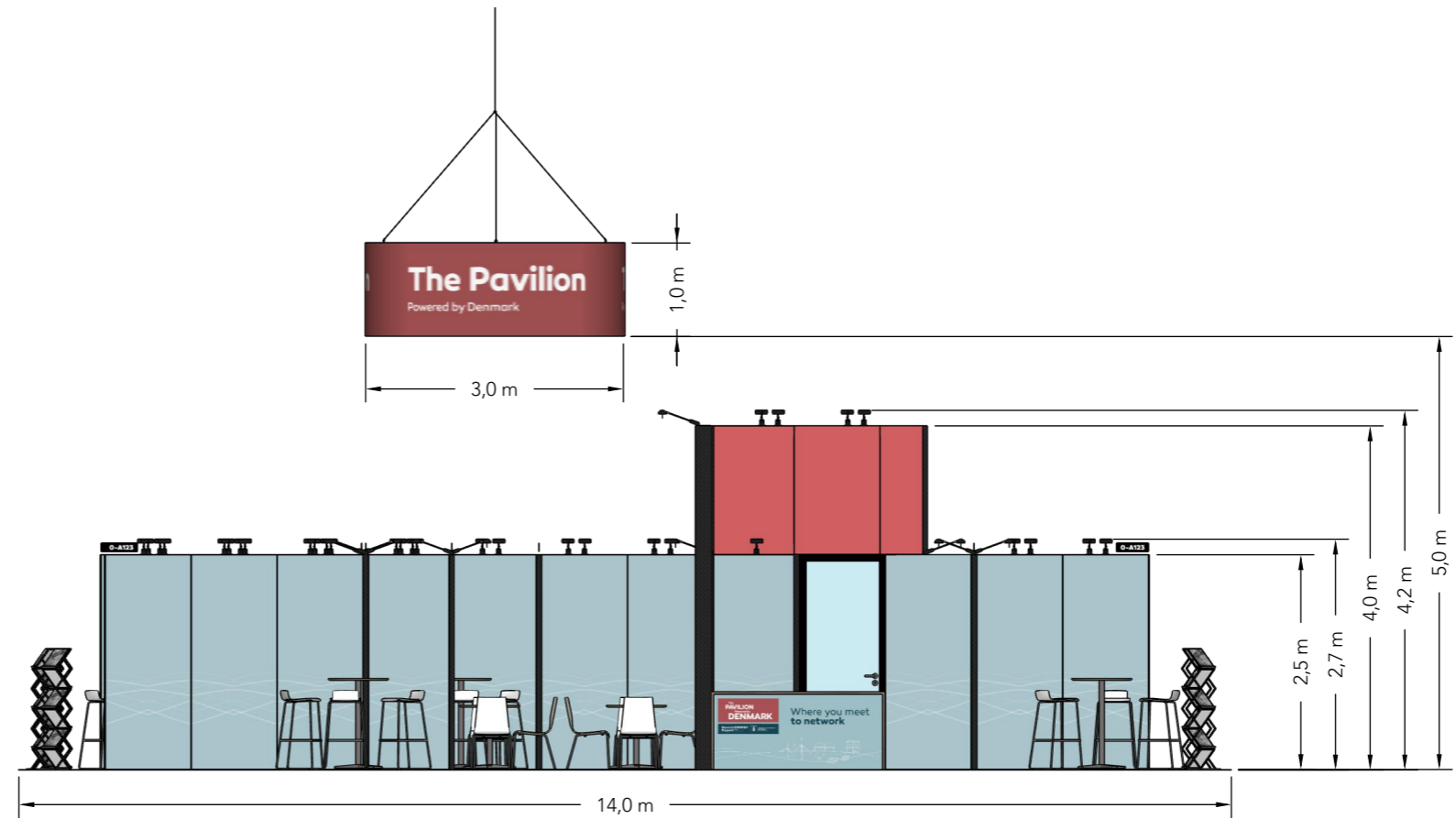
- Full size Fabric
- Single Frame Fabric

ATTENTION:
WALL HEIGHT FOR
AIRCO PROCESS
TECHNOLOGY AND
LOUNGE AREA 15m² IS
3968mm

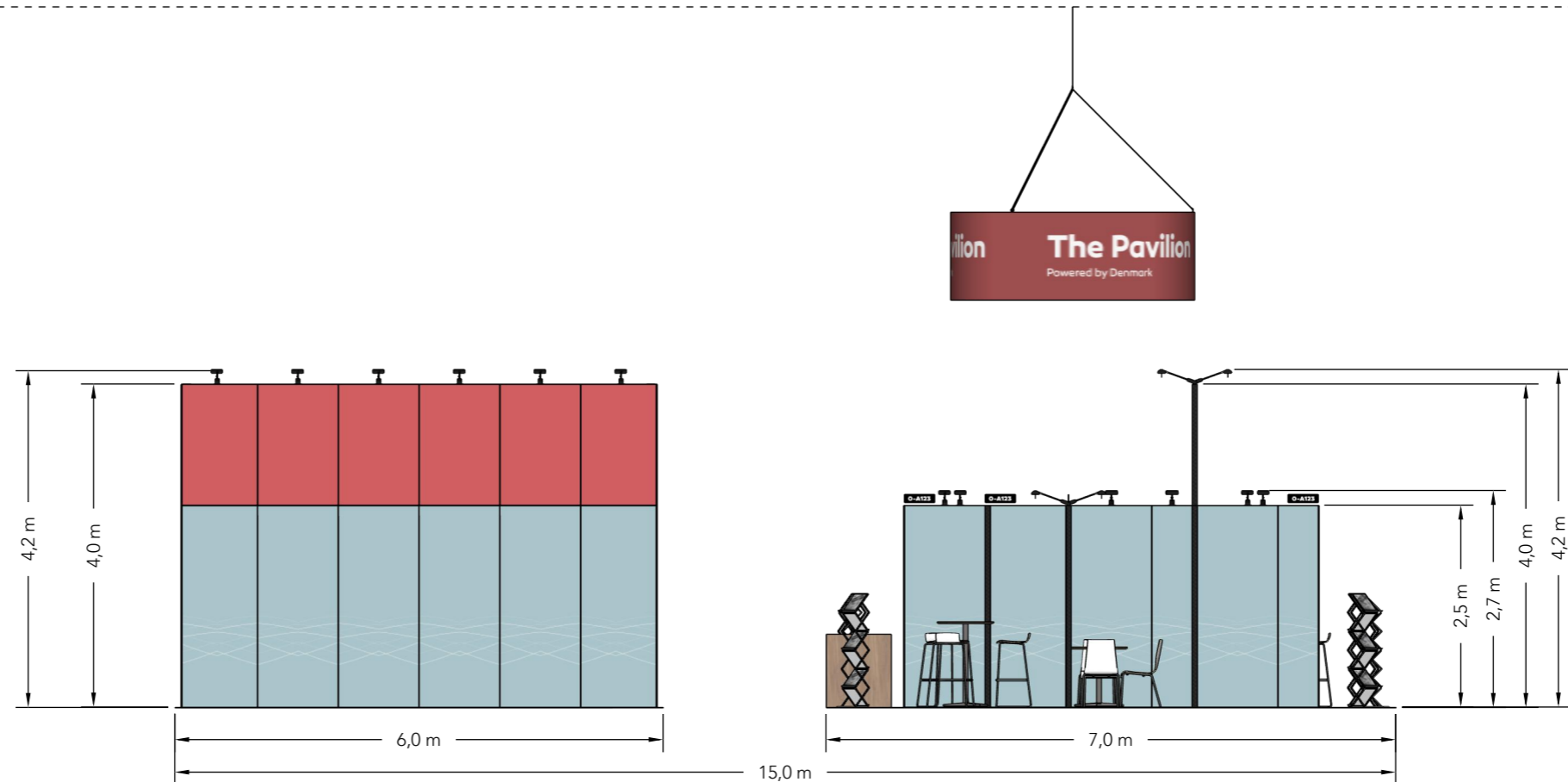


Elevations

Front



Side



Info

Client: Danish Energy Export
Exhibition: IFAT 2026

Project no.: DEE-IFA-26-05
Designed By: SMH
Hall: A4
Booth: Multi.

Creation Date: 06.03.2026
Revision Date: 18.03.2026
Revision no.: 4

Comments:

The drawing is indicative and without responsibility. The drawing is NOT to scale. The stand-builder will have the final call in all decisions regarding stability and security. Some products are only shown to indicate locations, but not the actual product as this product may be changed.
All design is subject to copyright by Compass Fairs A/S and Standesign A/S

